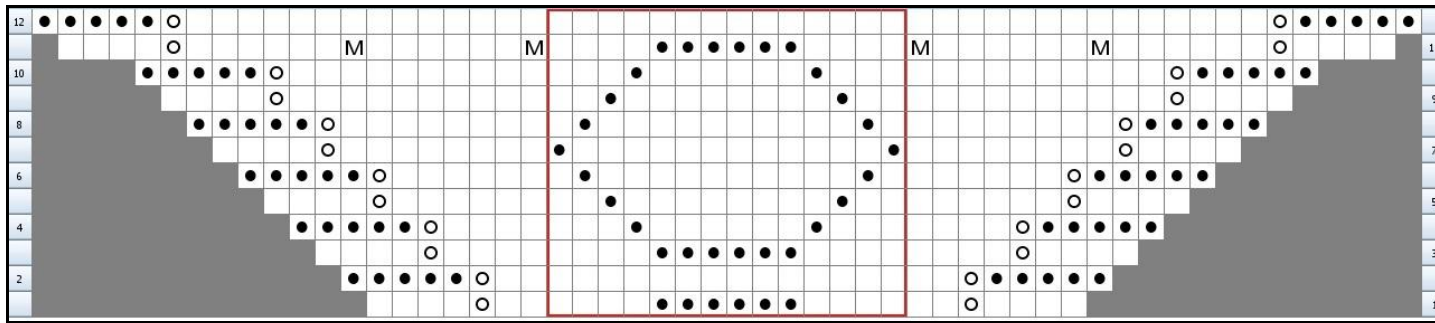


BODY OF SHAWL CHART:



Legend:

- No Stitch**
Placeholder - No stitch made.

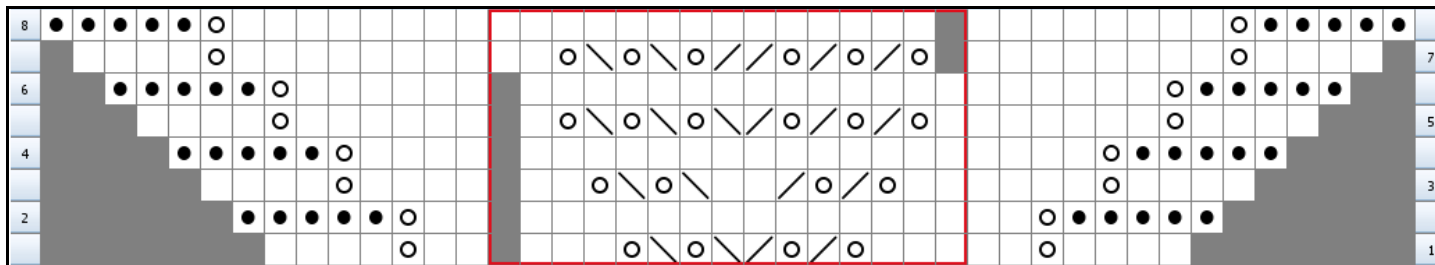
- knit**
 RS: knit stitch
 WS: purl stitch

- yo**
 RS: Yarn Over
 WS: Yarn Over

- purl**
 RS: purl stitch
 WS: knit stitch

- make one**
 RS: Make one by lifting strand
in between stitch just worked
and the next stitch, knit into
back of this thread.

LACE EDGE CHART:



Legend:

- No Stitch**
Placeholder - No stitch made.

- knit**
 RS: knit stitch
 WS: purl stitch

- yo**
 RS: Yarn Over
 WS: Yarn Over

- k2tog**
 RS: Knit two stitches together
as one stitch

- ssk**
 RS: Slip one stitch as if to knit,
Slip another stitch as if to knit.
Insert left-hand needle into
front of these 2 stitches and
knit them together

- purl**
 RS: purl stitch
 WS: knit stitch